



# CL-1200i

Chemiluminescence Immunoassay System



Von-Langen-Weg 10  
48565 Steinfurt / Germany  
Tel.: 02551/2097  
Fax: 02551/80883  
E-Mail: [info@keul.de](mailto:info@keul.de)  
Internet: [www.keul.de](http://www.keul.de)

**mindray**  
healthcare within reach

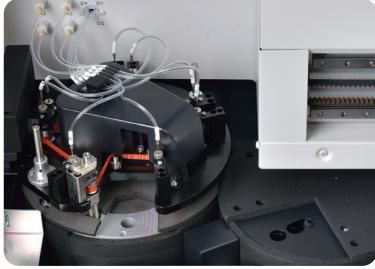


# CL-1200i

Chemiluminescence Immunoassay System



# Simple yet Rob



## Enhanced Reaction System

- 4-phase magnetic separation with precisely controlled temperature
- Consistent performance reliability with enhanced PMT detection system
- Non-touch vortexer mixing for reaction solution without any contamination



## Sample & Reagent Probe

- Precisely controlled syringe motors offer high precision aspiration
- Intelligent liquid level detection, clot detection, vertical and horizontal collision protection
- Efficient interior & exterior probe wash with high pressure wash buffer
- Programmable enhanced probe wash with detergent

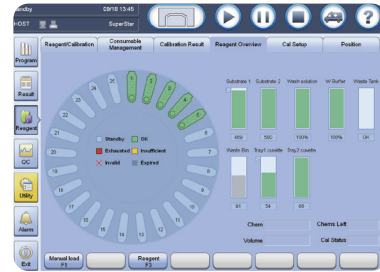


## Sample Handling

- Samples loading and offloading continuously by sample racks
- Unified sample racks with detachable adaptor
- Rack status real-time indicating on lane numbers
- STATs prioritized fast

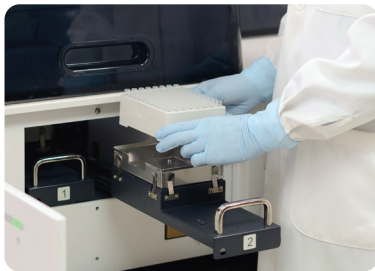


# Robust



## Intuitive Software Interface

Unified software interface, significantly reduces training effort  
Smooth interchange by intuitive software navigation  
Easy access to touch screen monitor with swing arm (optional)



## Consumables Management

Random access for cuvette loading without pause or stop  
88\*2 cuvettes in one batch, 200 cuvettes per waste bag  
Cuvettes & waste bag status real-time indicating



## Reagent & Substrate Handling

Easy for reagent & substrate handling, liquid reagents ready-to-use  
2°C~8°C non-stop refrigerated reagent carousel featured 25 positions  
Same reagent pack size with CL-2000i (50 tests/100 tests per pack)  
Reagents stable on board for up to 56 days



## Test Menu

### Thyroid

FT3  
FT4  
T3  
T4  
TSH  
Anti-TG  
Anti-TPO  
Thyroglobulin (TG)  
TRAB \*  
rT3 \*

### Down's screening

PAPP-A \*  
Free  $\beta$ -HCG \*

### Infectious Disease

HBsAg  
Anti-HBs  
HBeAg  
Anti-HBe  
Anti-HBc  
HIV combo  
Anti-HCV  
Anti-TP  
Anti-HBc IgM \*  
HBeAg quantitative \*

### Fertility

Total  $\beta$ -HCG  
FSH  
LH  
Prolactin  
E2  
E3  
TESTO  
PROG  
Free testosterone \*  
17-OH PROG \*  
SHBG \*

### Growth hormone

hGH \*  
IGF-1 \*  
AMH \*

### Cardiac

CK-MB  
Myoglobin  
Troponin I  
BNP  
Angiotension I \*  
Angiotension II \*  
Renin \*  
Aldosterone \*

### Metabolic

Intact PTH  
Calcitonin  
Vitamin D total  
Ferritin  
Vitamin B12  
Folate  
RBC Folate

### Diabetes

Insulin  
C-peptide

### Others

ACTH  
DHEA-S  
Cortisol

### Liver fibrosis

LN \*  
HA \*  
PIIINP \*  
C IV \*

\*To be launched

■ CE pending

### Tumor Marker

CEA  
AFP  
CA125  
CA15-3  
CA19-9  
FPSA  
TPSA  
NSE  
CYFRA 21-1  
CA72-4  
ProGRP \*  
PG I \*  
PG II \*  
SCCA \*  
HE4 \*  
CA242 \*  
CA50 \*

### Inflammation

PCT \*

# CL-1200i

## Chemiluminescence Immunoassay System

### Technical Specifications

#### General Information

Throughput Up to 180 tests/hour  
Measurement Principle Micron superparamagnetic particles platform with alkaline phosphatase (ALP) labeled reagents and AMPPD substrate

#### Sample Assembly

Sample Feeder Continuous sample loading and offloading by sample racks  
Sample Rack 10 positions per rack, same as BS-800/BS-2000/CL-2000i series  
Sample Capacity Up to 60 samples in one batch  
Sample Probe Steel probe, liquid level detection, clot detection, horizontal and vertical collision protection  
Sample Volume 10 $\mu$ l~200 $\mu$ l, with increment of 1 $\mu$ l  
Sample Dilution Automatic dilution with 1:2 ~ 1:80

#### Reagent Assembly

Reagent Disk 25 reagent positions, continuous loading, real-time mixing for magnetic particles  
Cooling System 2°C~8°C  
Reagent Pack 50 tests per pack, 100 tests per pack  
Reagent Scanning Built-in/external bar code reader scanning  
Reagent Probe Steel probe, liquid level detection, bubble detection, horizontal and vertical collision protection  
Reagent Volume 20 $\mu$ l~200 $\mu$ l, with increment of 1 $\mu$ l

#### Substrate System

Substrate Bottle 300/500 tests per bottle, bottom piercing  
Substrate Loading Capable of continuous loading during testing  
Substrate Heating Constant heating  
Aspiration Volume 200 $\mu$ l

#### Magnetic Separation Unit

Separation Assembly 4-phase magnetic separation  
Temperature Accuracy: 37 $\pm$ 0.3°C, fluctuation:  $\pm$ 0.2°C

#### Measurement and Reaction System

Detection Mode Photon counting  
Signal Detector Photomultiplier (PMT) photon counter  
PMT Calibration LED reference module  
Reaction Carousel 75 positions  
Temperature Accuracy: 37 $\pm$ 0.3°C, fluctuation:  $\pm$ 0.2°C  
Mixing Unit Non-touch vortexer mixing

#### Cuvette Loading and Waste Collection

Cuvette Disposable plastic cuvette  
Cuvette Loading 88 cuvettes per tray, two trays can be loaded in one batch, continuous loading and offloading  
Waste Collection Waste container, 185 cuvettes per box

#### Working Conditions

Power Supply 110V/115V~, 60Hz; 220V-240V~, 50Hz; 220V/230V~, 60Hz  
Input Power 2000VA  
Operating Temperature 15°C~30°C  
Relative Humidity 35%RH~80%RH, without condensation  
Dimension Main Unit: 1400mm\*760mm\*600mm (W\*D\*H)  
Weight: 225kg  
Altitude Height -400m~4000m

Mindray Building, Keji 12th Road South,  
High-tech Industrial Park, Nanshan, Shenzhen 518057, P.R. China  
Tel: +86 755 8188 8998 Fax: +86 755 26582680  
E-mail: intl-market@mindray.com www.mindray.com

**mindray** are registered trademarks or trademarks owned by Shenzhen Mindray Bio-medical Electronics Co., LTD.  
©2015 Shenzhen Mindray Bio-Medical Electronics Co., Ltd. All rights reserved. Specifications subject to changes without prior notice.  
P/N: ENG-CL1200i-21285x6-20160901

**mindray**



Von-Langen-Weg 10  
48565 Steinfurt / Germany  
Tel.: 02551/2097  
Fax: 02551/80883  
E-Mail: info@keul.de  
Internet: www.keul.de