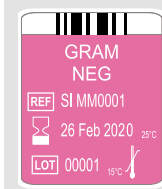




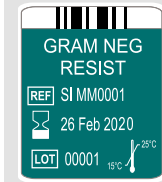
## READY TO USE LAB-ON-CHIP CARTRIDGES

SEPSIS PANEL



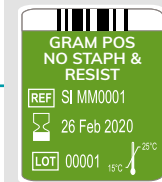
### • GRAM NEGATIVE code SI 1701.0102

*Acinetobacter baumannii*, *Enterobacteriaceae*, *Klebsiella aerogenes*, *Enterobacter cloacae* complex, *Escherichia coli*/*Shigella* sp, *Haemophilus influenzae*, *Klebsiella oxytoca*, *Klebsiella pneumoniae*, *Neisseria meningitidis*, *Proteus* spp, *Proteus mirabilis*, *Pseudomonas aeruginosa*, *Salmonella typhi*, *Serratia marcescens*, *Stenotrophomonas maltophilia*



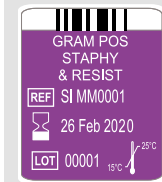
### • GRAM NEGATIVE RESISTANCE code SI 1701.0101

Carbapenemase: KPC, NDM, VIM, OXA 48, OXA 23, IMP  
ESBL: TEM, CTX-M, SHV, GES  
AmpC: CMY-I/MOX, CMY2  
Colistin: mcr-1 and mcr-2



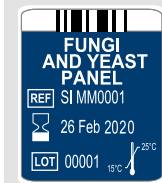
### • GRAM POSITIVE: OTHER THAN STAPHYLOCOCCI TYPING AND RESISTANCE code SI 1701.0104

*Bacillus subtilis*, *Enterococcus* spp, *Enterococcus faecalis*, *Enterococcus faecium*, *Listeria monocytogenes*, *Streptococcus* spp, *S. agalactiae*, *S. anginosus*, *S. pneumoniae*, *S. pyogenes*  
VanA, VanB, VanC1, VanC 2/3



### • GRAM POSITIVE: STAPHYLOCOCCI TYPING AND RESISTANCE code SI 1701.0103

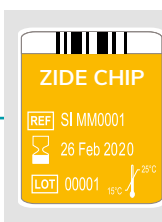
*Staphylococcus* spp, *S. aureus*, *S. epidermidis*, *S. haemolyticus*, *S. lugdunensis*, *S. sciuri*, *S. hominis*, *S. simulans*, *S. saprophyticus*, *S. xylosus*  
MecA, MecC, Scc mec-orfX  
VanA, VanB



### • YEAST / FUNGI code SI 1701.0105

*Aspergillus fumigatus*  
*Candida* spp., *Candida albicans*, *Candida glabrata*, *Candida krusei*, *Candida parapsilosis*, *Candida tropicalis*, *Candida auris*

TROPICAL DISEASES

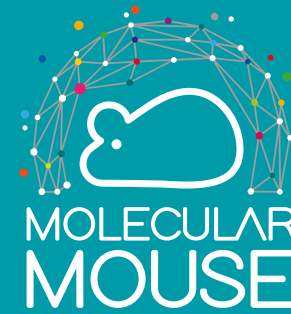


### • ZIDECHIP code SI 1701.0201

Zika (Asia and Africa)  
Chikungunya (Asia and Africa)  
Dengue (1, 2, 3 and 4)



## INSIDE INNOVATION



### MOLECULAR MOUSE VIDEO



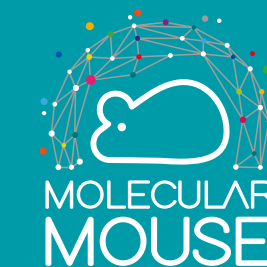
SMT\_BR0001\_MOLECULAR\_MOUSE.02\_00\_051119\_EN



READY TO USE LAB ON CHIP

# MOLECULAR MOUSE

THE WORLD'S FIRST  
HANDHELD qPCR SYSTEM



© Copyright 2019, Alifax S.r.l. (Italy). All rights reserved. No part of this document may be disclosed to any third party, reproduced, stored in a retrieval system or transmitted in any form or by any means, electronic, mechanical, photocopied, recorded, or otherwise, without the prior written permission of Alifax S.r.l. and shall at all times remain the property of Alifax S.r.l. The Recipient shall treat as confidential, all Confidential Information included in this and shall not use such Confidential Information for any purpose other than in connection with the document purpose.

Products under development. Not CE Marked and FDA registered. Not available for sale. The products and applications listed herein may incur further changes during the development. **Not for sale in US.**

### ALIFAX S.r.l.

Via Petrarca, 2/1 - Polverara (PD) - Italy - (+39) 049 0992000 | info@alifax.com | [www.alifax.com](http://www.alifax.com)

Entered in Padova companies register at the n. 04337640280. Company stock € 10.000.000 entirely deposited Company with single partner and subjected to direction and coordination of Alifax Holding S.p.A.

[www.alifax.com](http://www.alifax.com)



# Molecular Mouse System

Qualitative, Quantitative and Fast analysis of DNA and RNA target molecules through real-time PCR



COMPACT

EASY TO USE

RFID tag

Patented Technology



8.5 cm

14 cm

7 cm



SIZE

L14 x W7 x H8.5 (cm)



WEIGHT

300 g



POWER SUPPLY

12V DC, 1.2A

## MOLECULAR MOUSE READY TO USE LAB-ON-CHIP

The Lab-on-Chip is an electrically active microsystem that precisely controls the reaction temperature. It is a disposable device based on a silicon chip manufactured using innovative semiconductor technology.

All necessary reagents are lyophilized in each micro well (5 µl).

The RFID tag stores product and test information used by the software to perform the analysis.

6 simultaneous multiplex reactions up to 18 targets



### Performance parameters

Max. ramp rate heating: 15 °C/s (27 °F/s)  
Average ramp rate heating: 4 °C/s (7,2 °F/s)  
Max. ramp rate cooling: 7 °C/s (12,6 °F/s)  
Average ramp rate cooling: 3.5 °C/s (6,3 °F/s)

### Backup memory

350 analyses



## MOLECULAR MOUSE SOFTWARE

- Automatic analysis protocol starts through the RFID tag reading
- Up to **6 instruments** can be managed independently with **one software session**
- Multiple level user management
- Accurate data elaboration
- Connection to LIS
- Results on the presence/absence of the targets are reported along with the curves
- **User-friendly** interface
- Possibility to use your reagents and analysis protocol in the dedicated platform

## EASY AND QUICK WORKFLOW



1. Select the instrument
2. Insert the Lab-on-chip
3. Load the sample
4. Get results

RFID:  
Radio-Frequency Identification