

# Seeing Beyond Limits

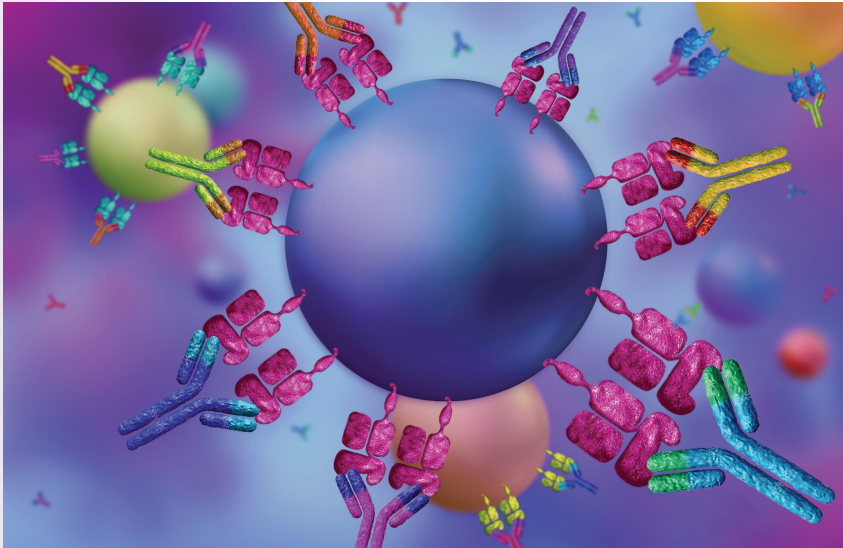
**MATCH IT!**<sup>®</sup>  
ANTIBODY

## **HLA Expertise, Simplified.**

The MATCH IT!<sup>®</sup> Antibody software suite was designed specifically as an accessory to assist in the evaluation of test results from the LIFECODES Antibody portfolio.

  
IMMUCOR<sup>®</sup>

Introducing **MATCH IT! Antibody**, a software designed specifically for simplifying the complexities of HLA.

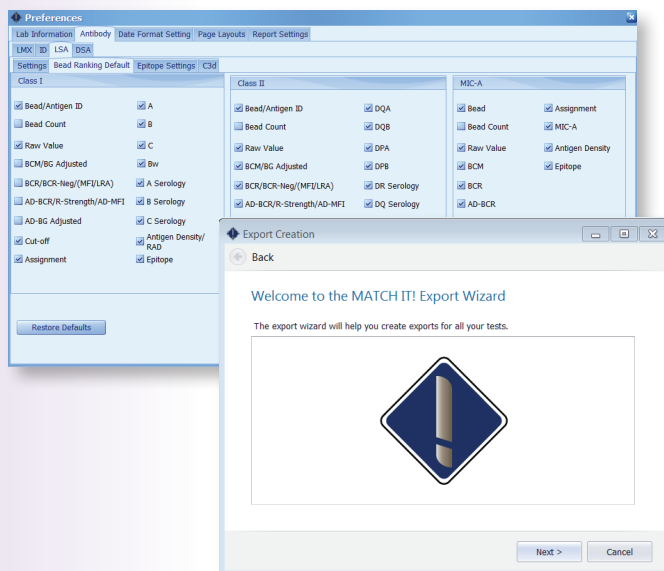


## Streamlined Data Analysis

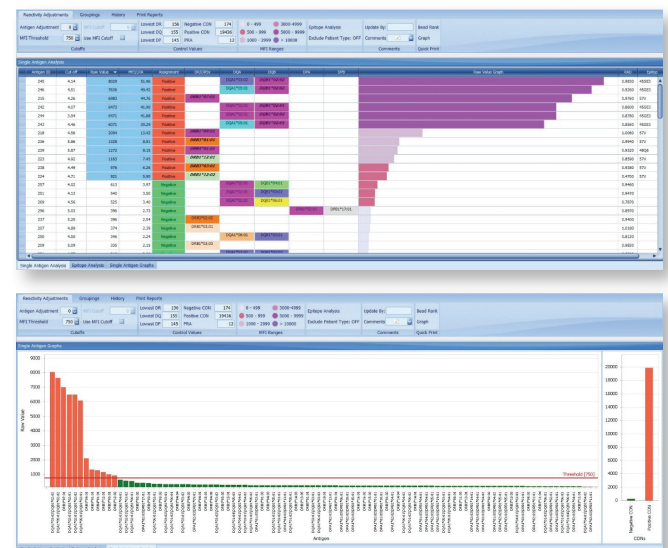
- Built in CREG and Eplet Analysis tools
- Advanced highlight and overlay tools to help determine antibody specificity
- Multiple Data Graphing features
- Automatic import of Luminex data
- Options for server based or local database installation
- Remote support provided by Immucor support teams
- Multiple custom utilities available to manage import of data into various LIS

## ADAPTIVE

**CUSTOMIZABLE** page layouts, exports and reports fit everyone's needs!



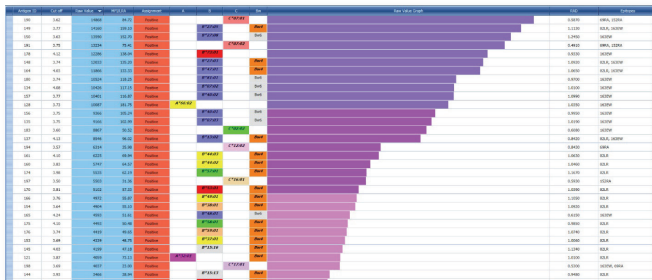
Flexible display options that include both a **BEAD RANKING GRID AND HISTOGRAM**. Both the bead rank and histogram can be customized.



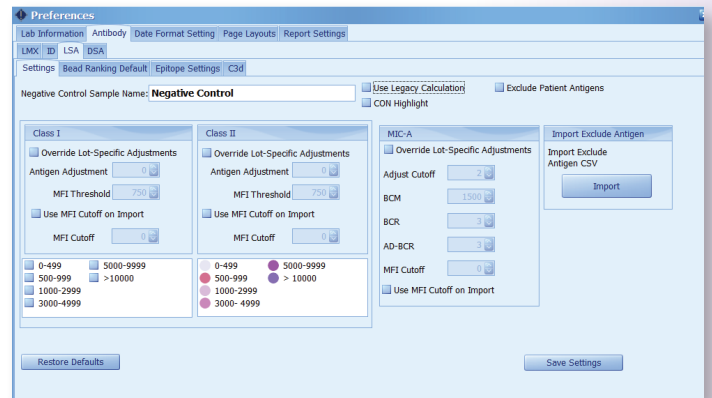


## ● EFFECTIVE

**EPITOPE ANALYSIS** features that predict most probable eplet. Bead Rank report also displays **RELATIVE ANTIGEN DENSITY** for each antigen as a tool to explain reactivity.

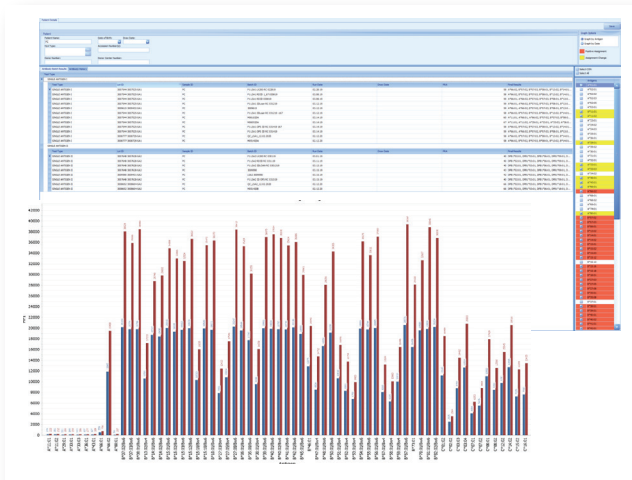


Multiple analysis preferences such as **MFI CUT OFF** to adjust cutoffs based on the knowledge of an experienced HLA technician.



## ● POWERFUL

**PATIENT VIEW** displays all batches for a given sample. They can be **GRAPHICALLY COMPARED** from one batch to another, and **ALL ANTIBODY HISTORY** viewed.



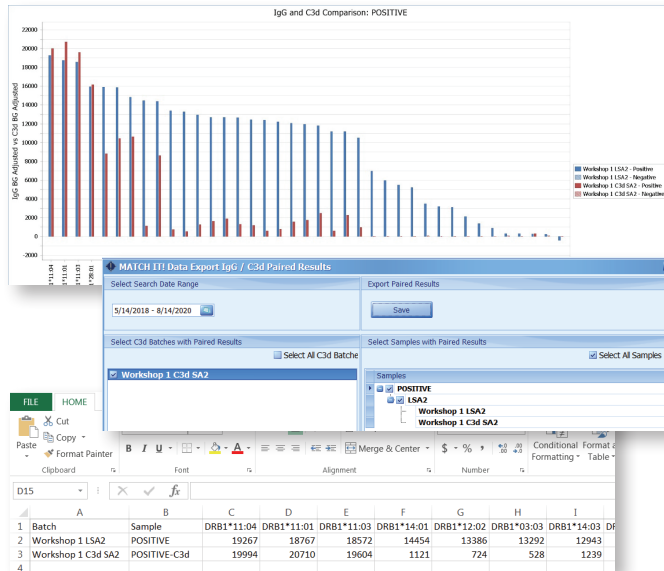
**COLOR CODED ANTIGENS** or groups of antigens based on serological cross-reactive groups (CREGs) for easier viewing.



● VALUABLE

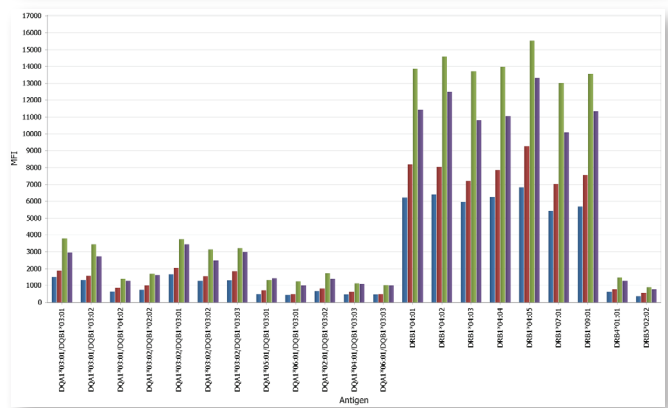
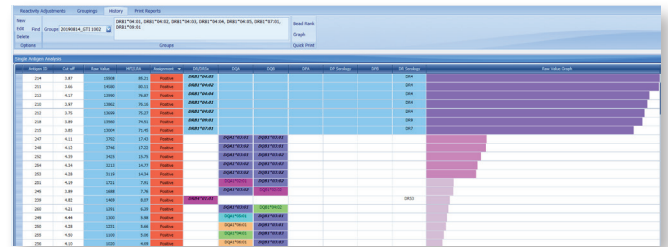
**DIRECT C3d AND LSA IgG COMPARISON**

with graphing tools and export options.



**OVERLAY AND GRAPHING OPTIONS**

to review data from same time points and/or for comparisons between the ID and LSA.



To learn more or to set up a demo with one of our Transplant Business Managers,  
**855.IMMUCOR (855.466.8267)** or visit **www.immucor.com**.

International Contact: **imarketing@immucor.com**



**www.immucor.com**

Please contact your Immucor Representative for any inquiry regarding the regulatory status of this product in your country/area.

