



MILESTONE
H E L P I N G
P A T I E N T S

MileONE - MileTWO

Tissue Processing with no compromise to quality,
Even for fatty tissues.

PROCESSING FATTY TISSUES WITH SUBOPTIMAL RESULTS? REAGENTS CAUSING INCONSISTENT QUALITY?

Fatty tissues are known to be the most tedious tissues Pathology Laboratories have to deal with. Processing breast, skin, brain and fatty colon specimens often leads to either suboptimal morphological quality or inconsistent results. Fatty tissues need better treatment and your team deserves quality which will lead to a prompt and reliable diagnosis, at any time for any tissue.

Give your laboratory a gift with **MileONE** and **MileTWO**!



MileONE AND MileTWO VALUES

Quality

No compromise to quality for any tissues of any size; fatty tissues included.

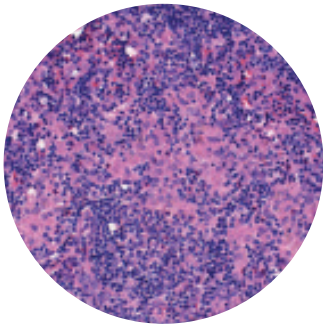
MileONE and MileTWO were designed by Milestone to grant consistent processing of normal fat content tissues with no compromise to high-fat content tissues like breast, brain, fatty colon and skin.

Non-Toxic

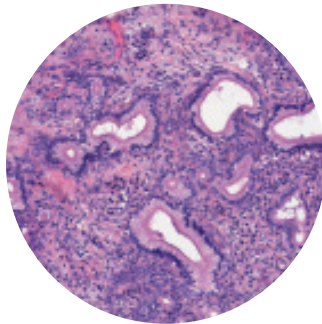
- **NO** Xylene, **NO** Toluene
- **NO** Aromatic Compounds
- **NO** Limonene
- **NO** Acetone

Cost Savings

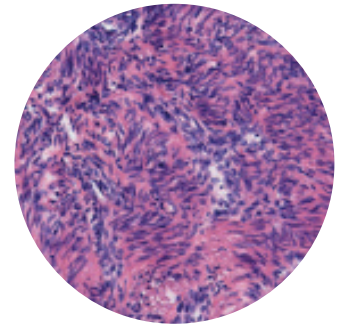
Convenient 5 Litre tanks of quality reagents, developed for more efficient processing in Milestone units, with 2D identification barcodes for documentation and reagent tracking.



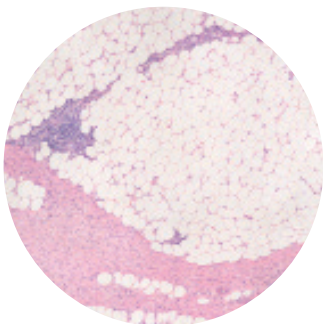
Lymphnode (20x)



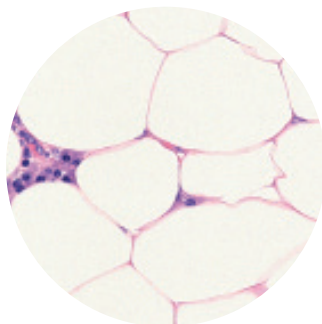
Epatic duct (10x)



Myoma (20x)



Colon fat (4x)



Breast fat (40x)

**FORGET UNDER
PROCESSED
FATTY TISSUE!**

Headquarters

MILESTONE Srl
Via Fatebenefratelli, 1/5
24010 Sorisole (BG) - Italy
Tel: +39 035 4128264
Fax: +39 035 575498
email: marketing@milestonemed.com

US Headquarters

MILESTONE MEDICAL TECHNOLOGIES, INC.
6475 Technology Avenue, Suite F
Kalamazoo, MI 49009 - USA
Tel: 269-488-4950 - Toll-free: 866-995-5300
Fax: 269-488-4949
email: info@milestonemed.com