

# ProciseDx

**Easy**

**Immediate**

**Accurate**



**Enabling True Point-of-Care Benefits**

# Central lab quality results with finger stick blood

## Easy to Use.

Doctor offices and pharmacies are not interested in adding difficult workflows to their routines.

### Ease of Use

- › Graphical user interface with a full color 177mm touch screen
- › QC once per lot of reagents
- › Ethernet/Wi-Fi connectivity to LIS/EMR systems (cellular ready)
- › Small enough for any office setting; 4.5kg-21cm-39cm

## Fast.

Every minute matters during a patient appointment or pharmacy visit. 10, 15, 20 minutes? That's not point-of-care.

### Speed

- › Results available in 2-5 minutes
- › Integrated internal and external barcode scanners improve workflow and reduce human errors
- › Finger prick whole blood eliminates all sample prep time required for serum assays.

## Lab Quality.

Even with the benefits of point-of-care, healthcare professionals are not willing to give up lab-quality results

### Accuracy

- › Sensitivity and specificity comparable to central lab testing
- › Internal controls ensure quantitative performance without customer adjustments
- › Robust platform with minimal moving parts for extended MTBF

## Straightforward Workflow

Collect.



Add.



Run.



Easy, Immediate, Accurate Point-of-Care Testing

**MAKE DECISIONS DURING TODAY'S VISIT**

Patients leave today's visit with **answers**, not just another appointment.

# Advantages of ProciseDx Platform



**Responsive touch screen**  
compatible with gloved hands

**Simple and intuitive design**  
with no moving parts  
ensures reliable and  
reproducible results

**Compact design**  
About the size of a shoe  
box, 4.5kg-21cm-39cm



**Full connectivity**  
LIS and network  
connections by  
wire or WiFi

Due to the self-contained design of all Procise assays,  
controls are only needed once per lot of according  
**to your facility's policy.**

**External barcode  
scanner** for scanning  
patient and user ID



## Simple and reliable design

with no moving  
parts ensures very  
low maintenance



**2D barcode**  
contains all the information  
needed for the assay,  
automatically scanned when  
the cartridge is inserted  
in the instrument

**Room temperature  
storage** with stability  
for up to 2 years

**Cartridge lid**  
contains all reagents  
in lyophilized beads

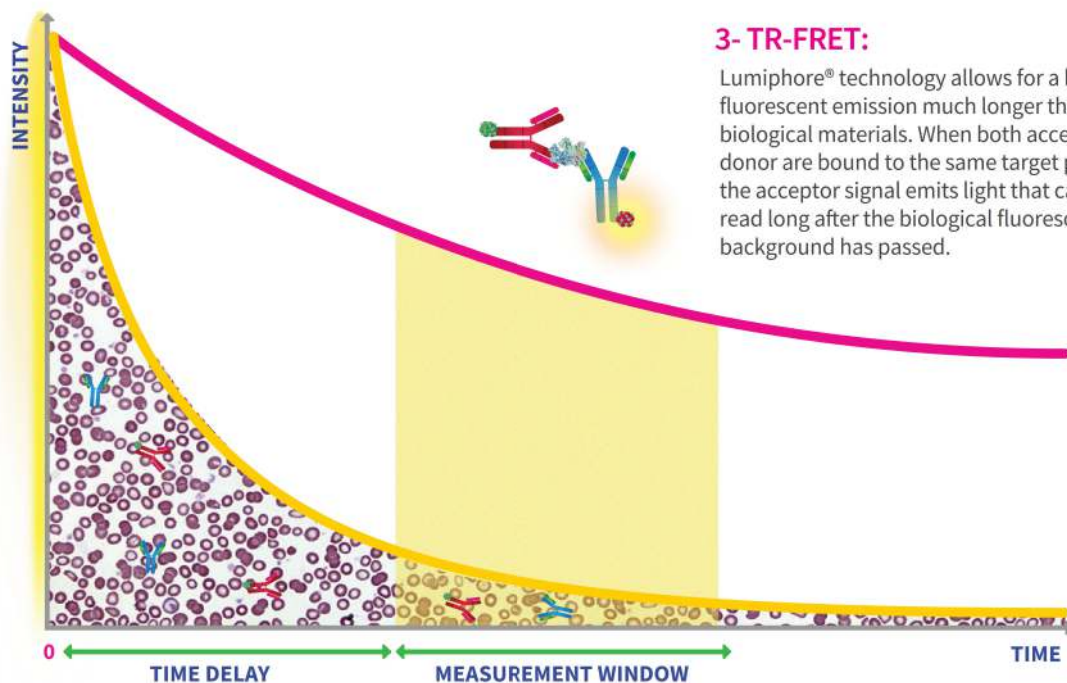
# Patented Lumiphore® technology:

Enables quantitative results by removing fluorescent background from whole blood



### 1- Excitation:

A flash of UV light is used to excite the sample



### 3- TR-FRET:

Lumiphore® technology allows for a long-lived fluorescent emission much longer than biological materials. When both acceptor and donor are bound to the same target protein, the acceptor signal emits light that can be read long after the biological fluorescent background has passed.

**2- Background:** Many biological materials fluoresce with UV excitation, but fade quickly over time.



Lumiphore®



Alexa Fluor®



Target Protein



When target protein is present, the binding structure and signal occurs (Alexa Fluor® glows)

#### TEST METHOD

tr-FRET  
immunoassay

#### ANALYSIS

Quantitative

#### TEST CAPACITY

1 test each

#### DISPLAY

175mm touchscreen

#### LIS /HIS CONNECTIVITY

Wire or wifi

#### AUTO-ID

Internal and External  
Barcode Scanners

#### TURNAROUND TIME

2-5 minutes

#### DIMENSION (MM)

210mm-390mm-145mm

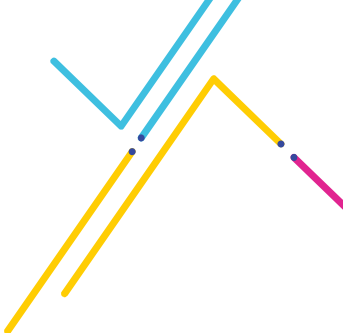
#### ACCESSORIES

Thermal printer compatible

#### WEIGHT

4.5kg

# Accurate, lab-quality results, now directly at Point-of-Care



ProciseDx TR-FRET assays:

Category	Item	Cat #	Sample Type	Sample Volume	Test Time	# / Kit
Inflammation	C-Reactive Protein Assay	4489	Finger prick, venous or serum	20µl	~2 minutes	20
	Fecal Calprotectin Assay	4664	Stool	15mg	5 minutes	20
Therapeutic Drug Monitoring	Infliximab Assay	4828	Finger prick, venous or serum	20µl	~4 minutes	20
	Adalimumab Assay	4853	Finger prick, venous or serum	20µl	~4 minutes	20

**Easy**

**Immediate**

**Accurate**



# ProciseDx

**Easy**

**Immediate**

**Accurate**



Schedule a demo at  
your convenience by  
**getting in  
contact with  
our team.**

**Headquarters**

9449 Carroll Park Drive,  
San Diego, California,  
92121, United States

**Email**

[info@procisediagnostics.com](mailto:info@procisediagnostics.com)

**Website**

[procisediagnostics.com](http://procisediagnostics.com)

**Distributor**

9449 Carroll Park Drive,  
San Diego, California,  
92121, United States

**Email**

[info@procisediagnostics.com](mailto:info@procisediagnostics.com)

**Website**

[procisediagnostics.com](http://procisediagnostics.com)